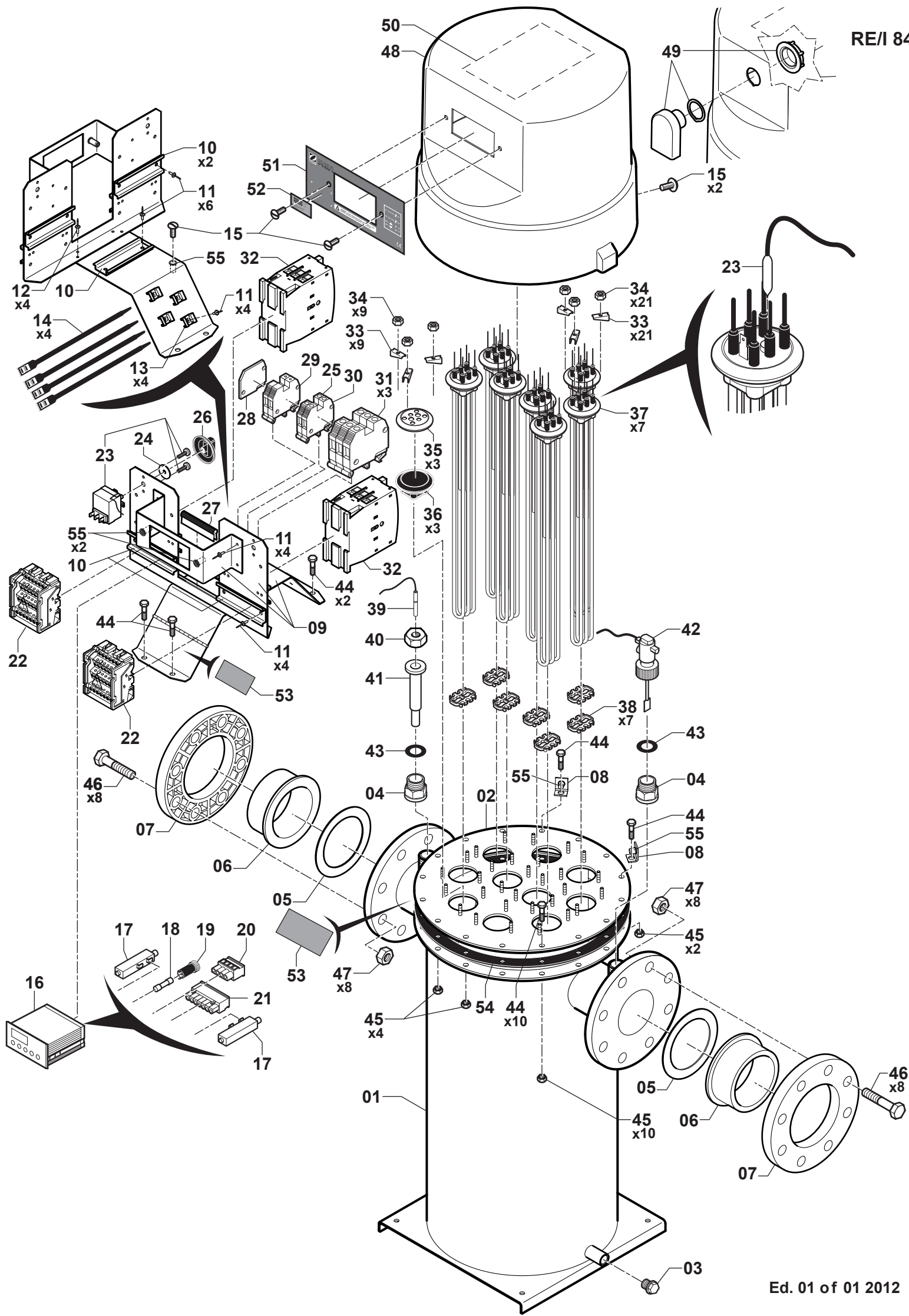


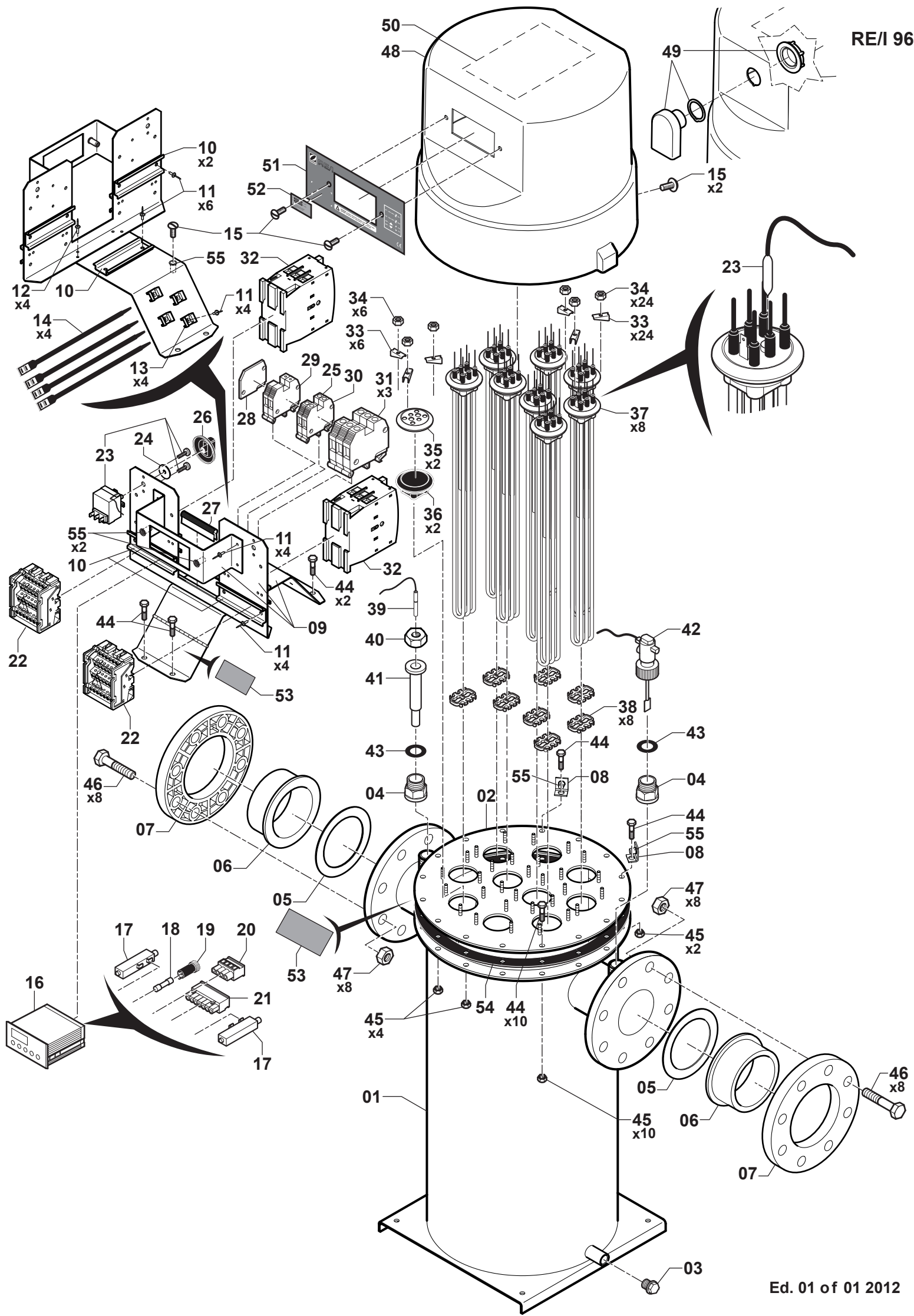
REI 60 Ed. 01 of 01-2012

N°	Ref. ZPCE	Description	QT
1	WLE01685	Stainless steel tank RE/I 60 to 120 kW	1
2		Stainless steel tank RE/I 60 to 120 kW cover	
3	WCL01320	Male brass cap 15/21	1
4	WCL01345	Brass feeder F20/27 M20/27	2
5	WIP03446	Flat joint Ø90-120 mm Thickness 2 mm	2
6	WIP03444	Ø90 collar to glue for RE/I	2
7	WIP03445	90 DN 80 Collar	2
8	WTO02310	Cover/Tank fixing bracket	2
9		Electric support set RE/I 60 to 120 kW	1
10	WPR01849	DIN Rail (REL and RE/U) 105x35x7.5 mm	5
11	WHR03151	4.8 x 18 rivet	4
12	WFI01441	4x8 rivet	18
13	WCC01298	Screw-on base for cable attachment collar	4
14	WCC01297	9x265 mm cable attachment collar	4
15	WFI01449	M6 x 16 A2 pan-head screw	5
16	WCE01307	ECP 230 regulator (sensor n°39 included) with:	1
17		Fixtures	2
18		3.15A fuse	1
19		Fuse holder	1
20		4 B connector	1
21		7 B connector	1
22	WTB03021	100A Terminal block	2
23	WUN02423	Regulation safety thermostat 30/80°C (RE/I)	1
24	WTC03152	Blocking disk for the safety thermostat	1
25	WCC03283	Beige terminal 6/10 mm	1
26	WEG01406	Black handle (Ø50)	1
27		Pinched protection joint	1
28		Beige end cover for 6/100 mm terminal	1
29	WCC01300	Remote terminal set (1-2) with cover (N°28)	1
30	WCC03282	Blue terminal 6/10 mm	1
31	WCC03001	Beige 35 mm screw terminal	3
32	WCF01064	DILM 40 power contactor	2
33	WEG01403	Bridle	30
34	WHR01584	Brass nut H M5/200	30
35	WEG02950	Resistance plate (cup)	5
36	WEG01410	Rubber collar	5
37	WEG01415	Straight 12 kW titanium resistance	5
38	WIB01610	Resistance strut (RE/L RE/I RE/U)	5
39	WCE01311	PTC regulation sensor	1
40	WCL03663	20/27 pre-pierced Ø14 nut	1
41	WIB01624	Flat glove finger	1
42	WSK02014	Stainless steel flow switch	1
43	WNS01780	Joint 20/27	2
44	WFI01448	MX TH EF 8 X 25 A2 screw	16
45	WFI01439	HU M8 A2 nut	16
46	WVI03470	H head M16 x 70 Stainless steel A2 screw	16
47	WVI03471	HU M16 Stainless steel A2 nut	16
48	WRB01855	Warmer cover RE/I 60 to 120 kW	1
49	WTB02120	ATLANTIQUE Ø30 ailer	1
50	WSR03827	Electric diagram adhesive RE/I 60 to 120 kW	1
51	WTI03477	Cover face adhesive RE/I with Zodiac REI logo	1
52		TYPE-N/S-POWER Adhesive	1
53		IDENTIFICATION PLATE Adhesive	1
54	WJW01663	Cut joint Thickness 4 mm (RE/I)	1
55	WHR01551	M6 collar insert	5



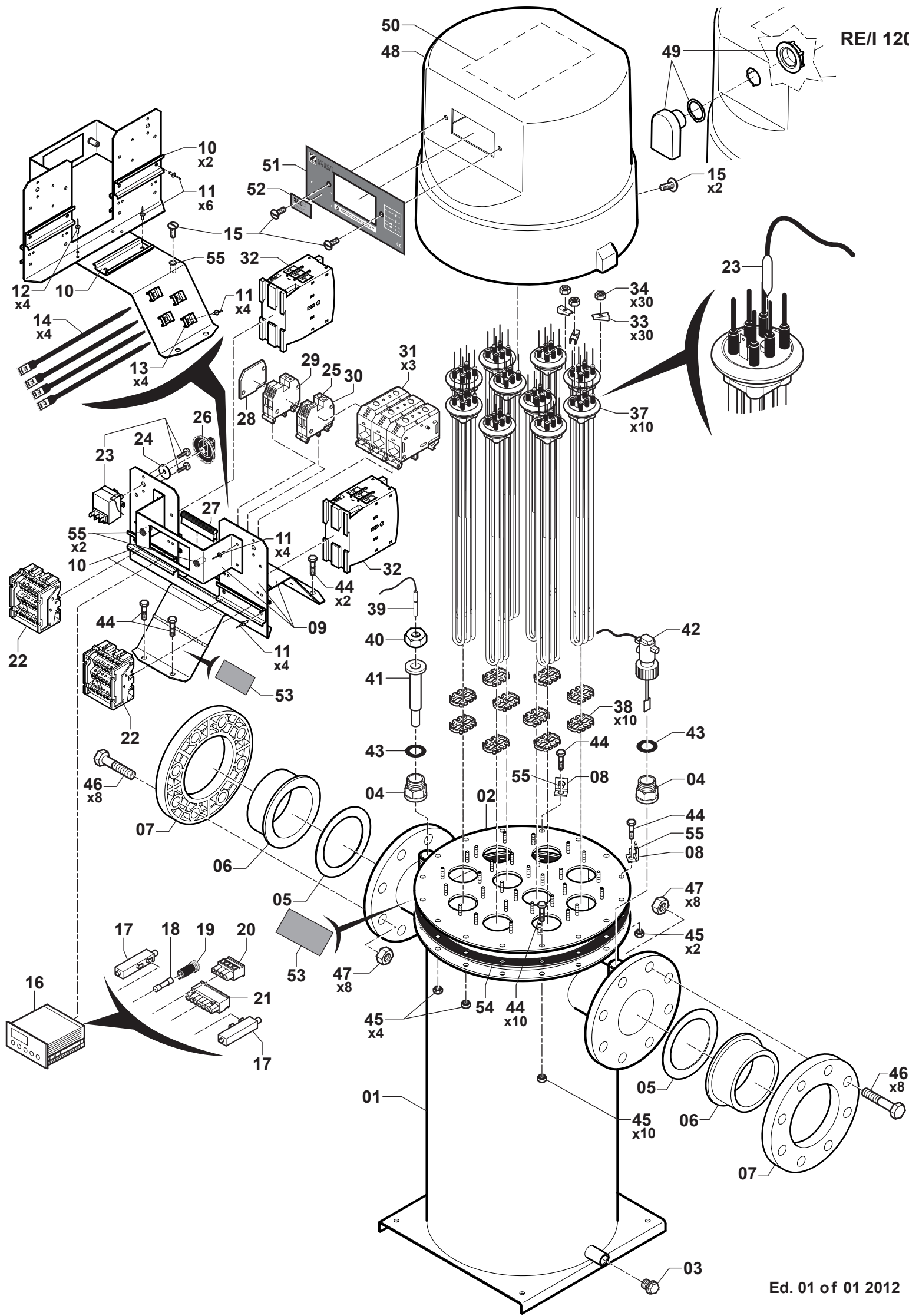
REI 84 Ed. 01 of 01-2012

N°	Ref. ZPCE	Description	QT
1	WLE01685	Stainless steel tank RE/I 60 to 120 kW	1
2		Stainless steel tank RE/I 60 to 120 kW cover	
3	WCL01320	Male brass cap 15/21	1
4	WCL01345	Brass feeder F20/27 M20/27	2
5	WIP03446	Flat joint Ø90-120 mm Thickness 2 mm	2
6	WIP03444	Ø90 collar to glue for RE/I	2
7	WIP03445	90 DN 80 Collar	2
8	WTO02310	Cover/Tank fixing bracket	2
9		Electric support set RE/I 60 to 120 kW	1
10	WPR01849	DIN Rail (REL and RE/U) 105x35x7.5 mm	5
11	WHR03151	4.8 x 18 rivet	4
12	WFI01441	4x8 rivet	18
13	WCC01298	Screw-on base for cable attachment collar	4
14	WCC01297	9x265 mm cable attachment collar	4
15	WFI01449	M6 x 16 A2 pan-head screw	5
16	WCE01307	ECP 230 regulator (sensor n°39 included) with:	1
17		Fixtures	2
18		3.15A fuse	1
19		Fuse holder	1
20		4 B connector	1
21		7 B connector	1
22	WTB03021	100A Terminal block	2
23	WUN02423	Regulation safety thermostat 30/80°C (RE/I)	1
24	WTC03152	Blocking disk for the safety thermostat	1
25	WCC03283	Beige terminal 6/10 mm	1
26	WEG01406	Black handle (Ø50)	1
27		Pinched protection joint	1
28		Beige end cover for 6/100 mm terminal	1
29	WCC01300	Remote terminal set (1-2) with cover (N°28)	1
30	WCC03282	Blue terminal 6/10 mm	1
31	WCC03001	Beige 35 mm screw terminal	3
32	WCF01070	DILM 40 power contactor	2
33	WEG01403	Bridle	30
34	WHR01584	Brass nut H M5/200	30
35	WEG02950	Resistance plate (cup)	3
36	WEG01410	Rubber collar	3
37	WEG01415	Straight 12 kW titanium resistance	7
38	WIB01610	Resistance strut (RE/L RE/I RE/U)	7
39	WCE01311	PTC regulation sensor	1
40	WCL03663	20/27 pre-pierced Ø14 nut	1
41	WIB01624	Flat glove finger	1
42	WSK02014	Stainless steel flow switch	1
43	WNS01780	Joint 20/27	2
44	WFI01448	MX TH EF 8 X 25 A2 screw	16
45	WFI01439	HU M8 A2 nut	16
46	WVI03470	H head M16 x 70 Stainless steel A2 screw	16
47	WVI03471	HU M16 Stainless steel A2 nut	16
48	WRB01855	Warmer cover RE/I 60 to 120 kW	1
49	WTB02120	ATLANTIQUE Ø30 ailer	1
50	WSR03827	Electric diagram adhesive RE/I 60 to 120 kW	1
51	WTI03477	Cover face adhesive RE/I with Zodiac REI logo	1
52		TYPE-N/S-POWER Adhesive	1
53		IDENTIFICATION PLATE Adhesive	1
54	WJW01663	Cut joint Thickness 4 mm (RE/I)	1
55	WHR01551	M6 collar insert	5



REI 96 Ed. 01 of 01-2012

N°	Ref. ZPCE	Description	QT
1	WLE01685	Stainless steel tank RE/I 60 to 120 kW	1
2		Stainless steel tank RE/I 60 to 120 kW cover	
3	WCL01320	Male brass cap 15/21	1
4	WCL01345	Brass feeder F20/27 M20/27	2
5	WIP03446	Flat joint Ø90-120 mm Thickness 2 mm	2
6	WIP03444	Ø90 collar to glue for RE/I	2
7	WIP03445	90 DN 80 Collar	2
8	WTO02310	Cover/Tank fixing bracket	2
9		Electric support set RE/I 60 to 120 kW	1
10	WPR01849	DIN Rail (REL and RE/U) 105x35x7.5 mm	5
11	WHR03151	4.8 x 18 rivet	4
12	WFI01441	4x8 rivet	18
13	WCC01298	Screw-on base for cable attachment collar	4
14	WCC01297	9x265 mm cable attachment collar	4
15	WFI01449	M6 x 16 A2 pan-head screw	5
16	WCE01307	ECP 230 regulator (sensor n°39 included) with:	1
17		Fixtures	2
18		3.15A fuse	1
19		Fuse holder	1
20		4 B connector	1
21		7 B connector	1
22	WTB03021	100A Terminal block	2
23	WUN02423	Regulation safety thermostat 30/80°C (RE/I)	1
24	WTC03152	Blocking disk for the safety thermostat	1
25	WCC03283	Beige terminal 6/10 mm	1
26	WEG01406	Black handle (Ø50)	1
27		Pinched protection joint	1
28		Beige end cover for 6/100 mm terminal	1
29	WCC01300	Remote terminal set (1-2) with cover (N°28)	1
30	WCC03282	Blue terminal 6/10 mm	1
31	WCC03001	Beige 35 mm screw terminal	3
32	WCF01070	DILM 40 power contactor	2
33	WEG01403	Bridle	30
34	WHR01584	Brass nut H M5/200	30
35	WEG02950	Resistance plate (cup)	2
36	WEG01410	Rubber collar	2
37	WEG01415	Straight 12 kW titanium resistance	8
38	WIB01610	Resistance strut (RE/L RE/I RE/U)	8
39	WCE01311	PTC regulation sensor	1
40	WCL03663	20/27 pre-pierced Ø14 nut	1
41	WIB01624	Flat glove finger	1
42	WSK02014	Stainless steel flow switch	1
43	WNS01780	Joint 20/27	2
44	WFI01448	MX TH EF 8 X 25 A2 screw	16
45	WFI01439	HU M8 A2 nut	16
46	WVI03470	H head M16 x 70 Stainless steel A2 screw	16
47	WVI03471	HU M16 Stainless steel A2 nut	16
48	WRB01855	Warmer cover RE/I 60 to 120 kW	1
49	WTB02120	ATLANTIQUE Ø30 ailer	1
50	WSR03827	Electric diagram adhesive RE/I 60 to 120 kW	1
51	WTI03477	Cover face adhesive RE/I with Zodiac REI logo	1
52		TYPE-N/S-POWER Adhesive	1
53		IDENTIFICATION PLATE Adhesive	1
54	WJW01663	Cut joint Thickness 4 mm (RE/I)	1
55	WHR01551	M6 collar insert	5



REI 120 Ed. 01 of 01-2012

N°	Ref. ZPCE	Description	QT
1	WLE01685	Stainless steel tank RE/I 60 to 120 kW	1
2		Stainless steel tank RE/I 60 to 120 kW cover	
3	WCL01320	Male brass cap 15/21	1
4	WCL01345	Brass feeder F20/27 M20/27	2
5	WIP03446	Flat joint Ø90-120 mm Thickness 2 mm	2
6	WIP03444	Ø90 collar to glue for RE/I	2
7	WIP03445	90 DN 80 Collar	2
8	WTO02310	Cover/Tank fixing bracket	2
9		Electric support set RE/I 60 to 120 kW	1
10	WPR01849	DIN Rail (REL and RE/U) 105x35x7.5 mm	5
11	WHR03151	4.8 x 18 rivet	4
12	WFI01441	4x8 rivet	18
13	WCC01298	Screw-on base for cable attachment collar	4
14	WCC01297	9x265 mm cable attachment collar	4
15	WFI01449	M6 x 16 A2 pan-head screw	5
16	WCE01307	ECP 230 regulator (sensor n°39 included) with:	1
17		Fixtures	2
18		3.15A fuse	1
19		Fuse holder	1
20		4 B connector	1
21		7 B connector	1
22	WTB03021	100A Terminal block	2
23	WUN02423	Regulation safety thermostat 30/80°C (RE/I)	1
24	WTC03152	Blocking disk for the safety thermostat	1
25	WCC03283	Beige terminal 6/10 mm	1
26	WEG01406	Black handle (Ø50)	1
27		Pinched protection joint	1
28		Beige end cover for 6/100 mm terminal	1
29	WCC01300	Remote terminal set (1-2) with cover (N°28)	1
30	WCC03282	Blue terminal 6/10 mm	1
31	WCC03285	Beige 35 mm screw terminal	3
32	WCF01071	DILM 40 power contactor	2
33	WEG01403	Bridle	30
34	WHR01584	Brass nut H M5/200	30
35	WEG02950	Resistance plate (cup)	0
36	WEG01410	Rubber collar	0
37	WEG01415	Straight 12 kW titanium resistance	10
38	WIB01610	Resistance strut (RE/L RE/I RE/U)	10
39	WCE01311	PTC regulation sensor	1
40	WCL03663	20/27 pre-pierced Ø14 nut	1
41	WIB01624	Flat glove finger	1
42	WSK02014	Stainless steel flow switch	1
43	WNS01780	Joint 20/27	2
44	WFI01448	MX TH EF 8 X 25 A2 screw	16
45	WFI01439	HU M8 A2 nut	16
46	WVI03470	H head M16 x 70 Stainless steel A2 screw	16
47	WVI03471	HU M16 Stainless steel A2 nut	16
48	WRB01855	Warmer cover RE/I 60 to 120 kW	1
49	WTB02120	ATLANTIQUE Ø30 ailer	1
50	WSR03827	Electric diagram adhesive RE/I 60 to 120 kW	1
51	WTI03477	Cover face adhesive RE/I with Zodiac REI logo	1
52		TYPE-N/S-POWER Adhesive	1
53		IDENTIFICATION PLATE Adhesive	1
54	WJW01663	Cut joint Thickness 4 mm (RE/I)	1
55	WHR01551	M6 collar insert	5